

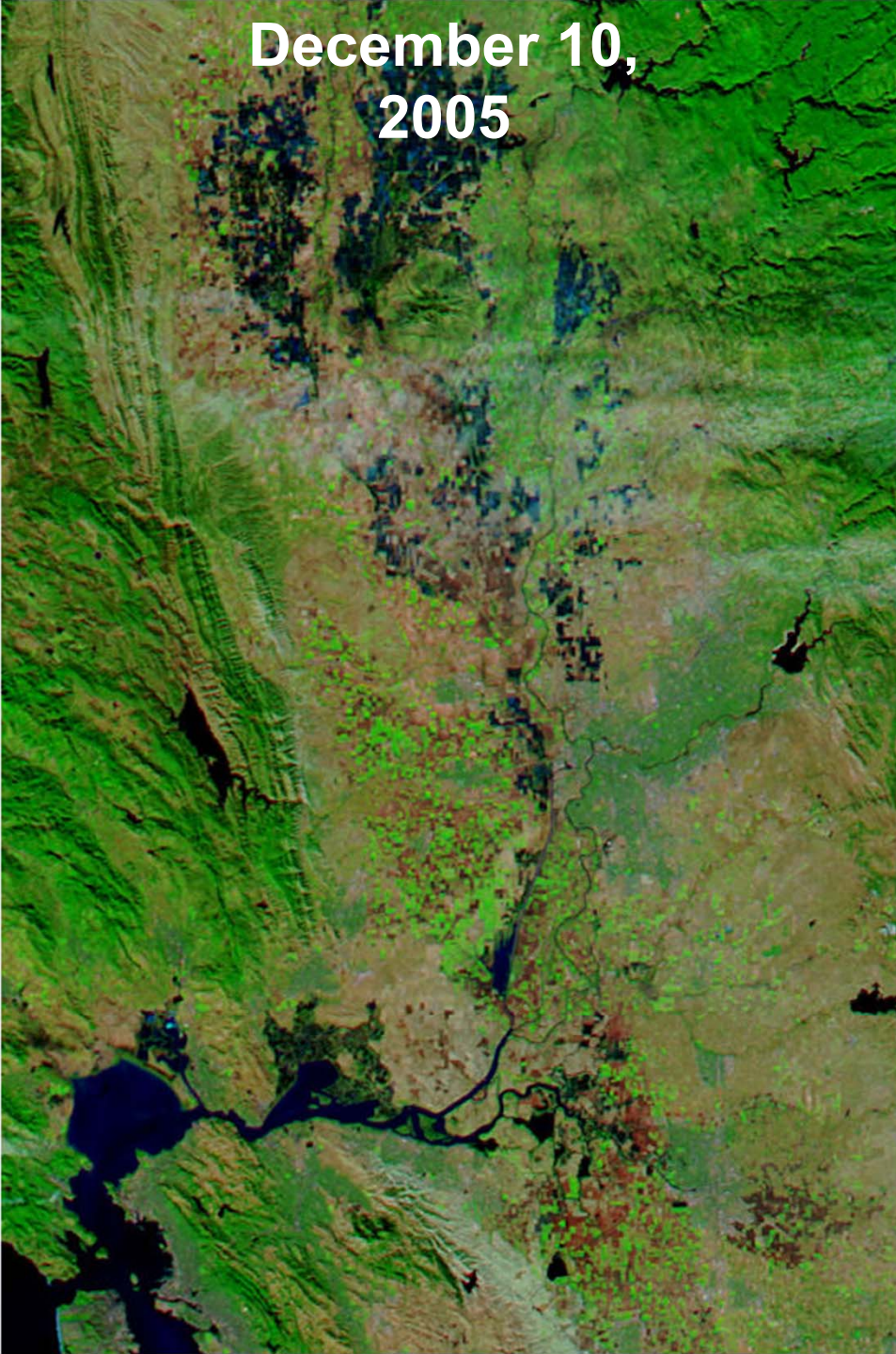


The Yolo Bypass Floodplain: An Example Monitoring Framework

Ted Sommer

California Department of Water Resources

December 10,
2005



January 4,
2006



Source: NASA Earth Observatory



Knights Landing Ridge Cut

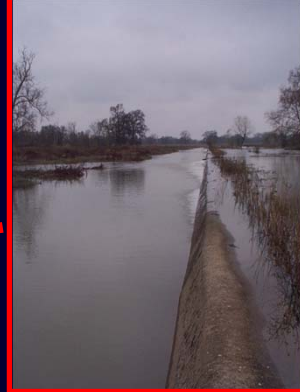
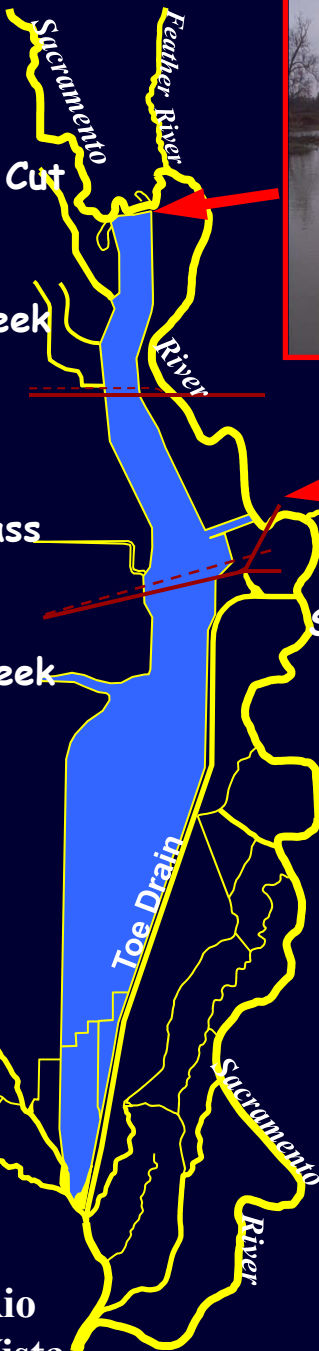
Cache Creek

Willow Slough Bypass

Putah Creek

Drains to Delta

Rio Vista



Sacramento River Inputs

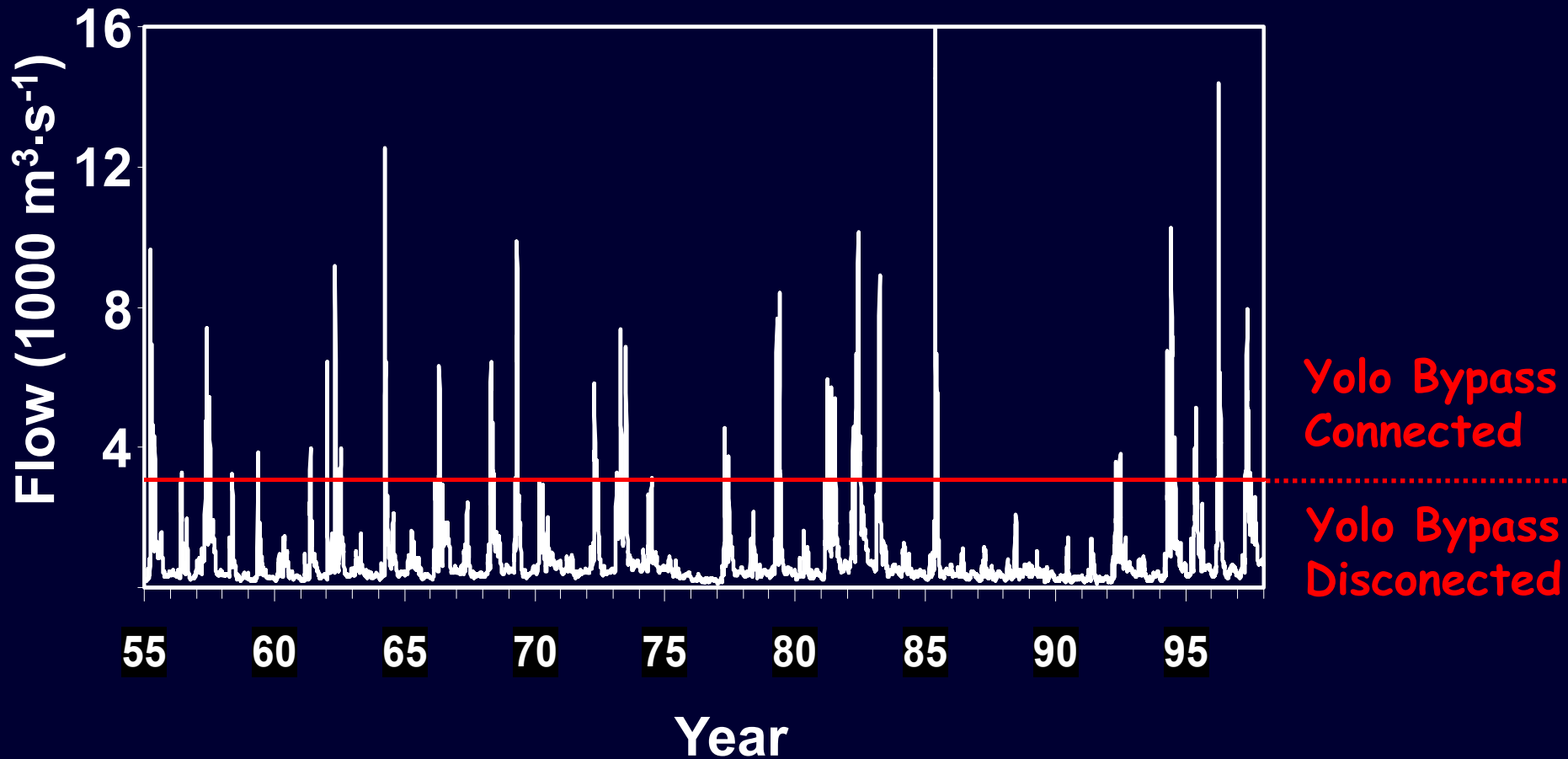


American River
Sacramento

Toe Drain

Sacramento River

Incomplete Connectivity With Sacramento River



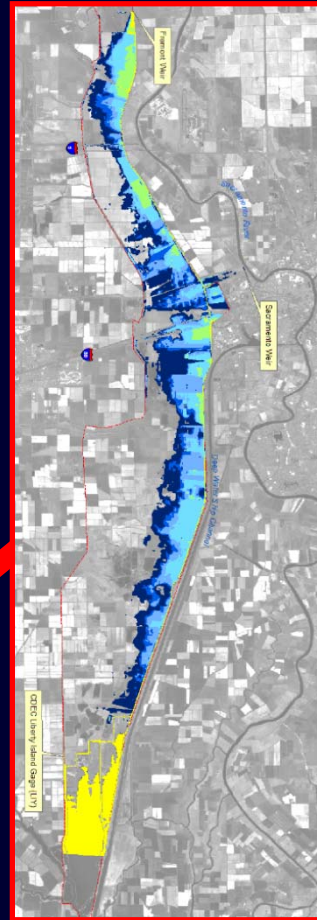
Why Yolo Bypass Matters



- Shallow
- Light currents
- Long residence time
- More habitat



Key oppor Simple Restoration Conceptolo Bypass



Fish Passage



Rearing Habitat



Exports to Estuary



Lots of Baseline Data

Beach Seine (98-Present)



Screw Trap (98-Present)



Fyke Trap (99- Present)



Water Quality & Food Web
(98-Present)



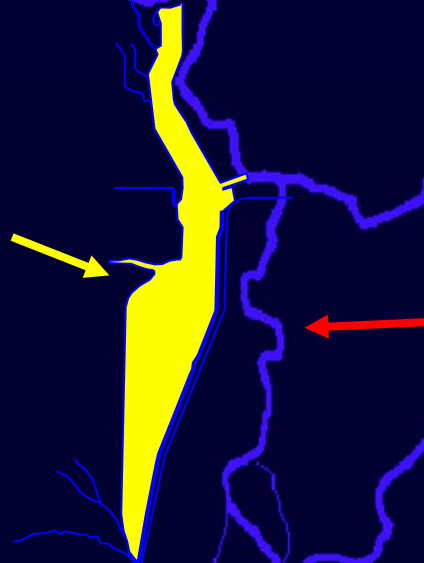
Ability to Make Side-by-Side Comparisons



Yolo Bypass



**Sacramento
River**



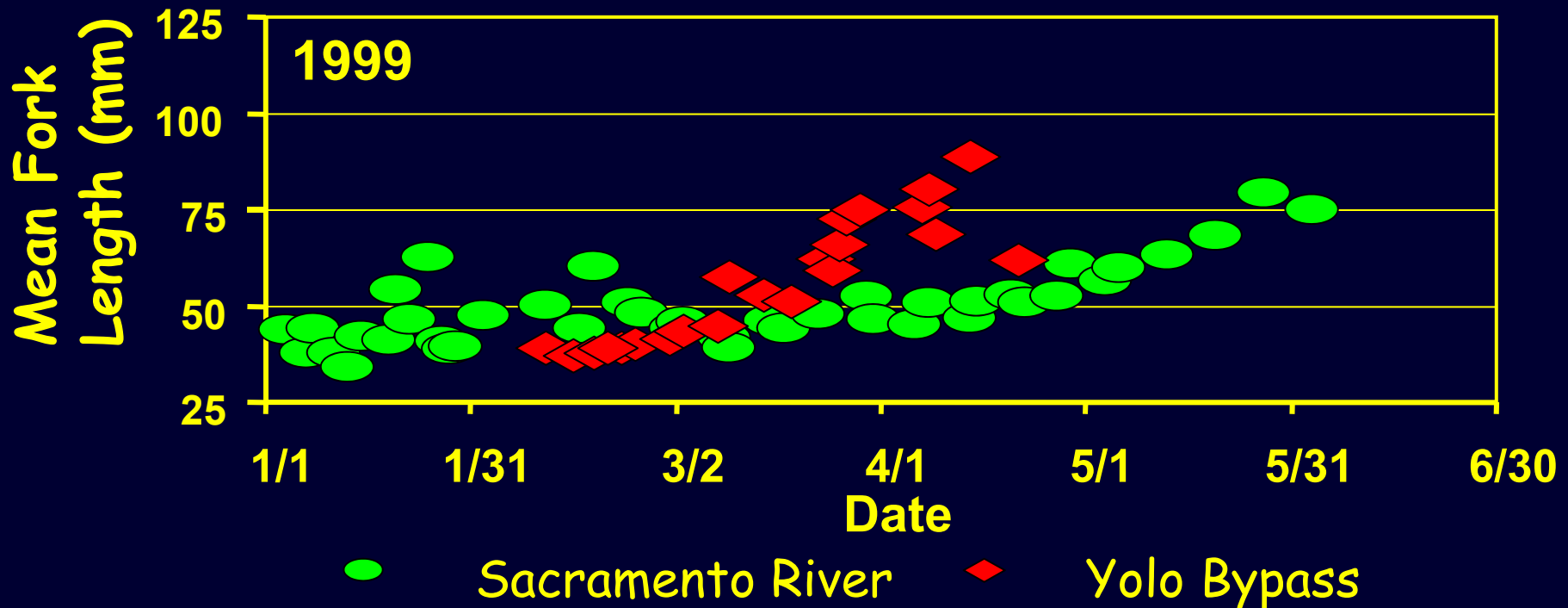
**Sacramento-
San Joaquin Delta**

San Francisco Bay

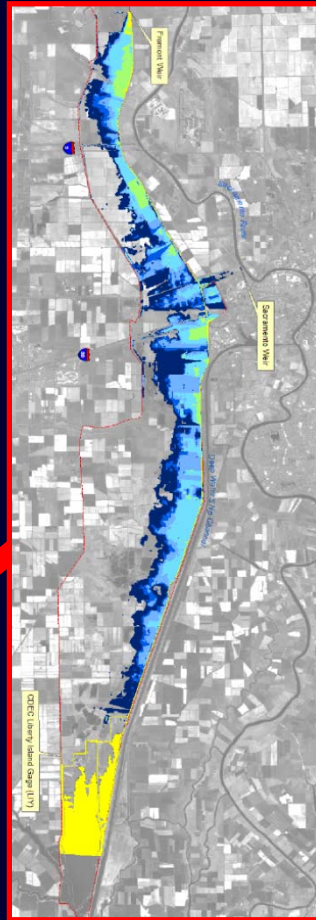
Floodplain Habitat Supports Phenomenal Growth



Photo: Jeffres et al. (2007)



Key opportunity for Active Management Bypass



Fish Passage



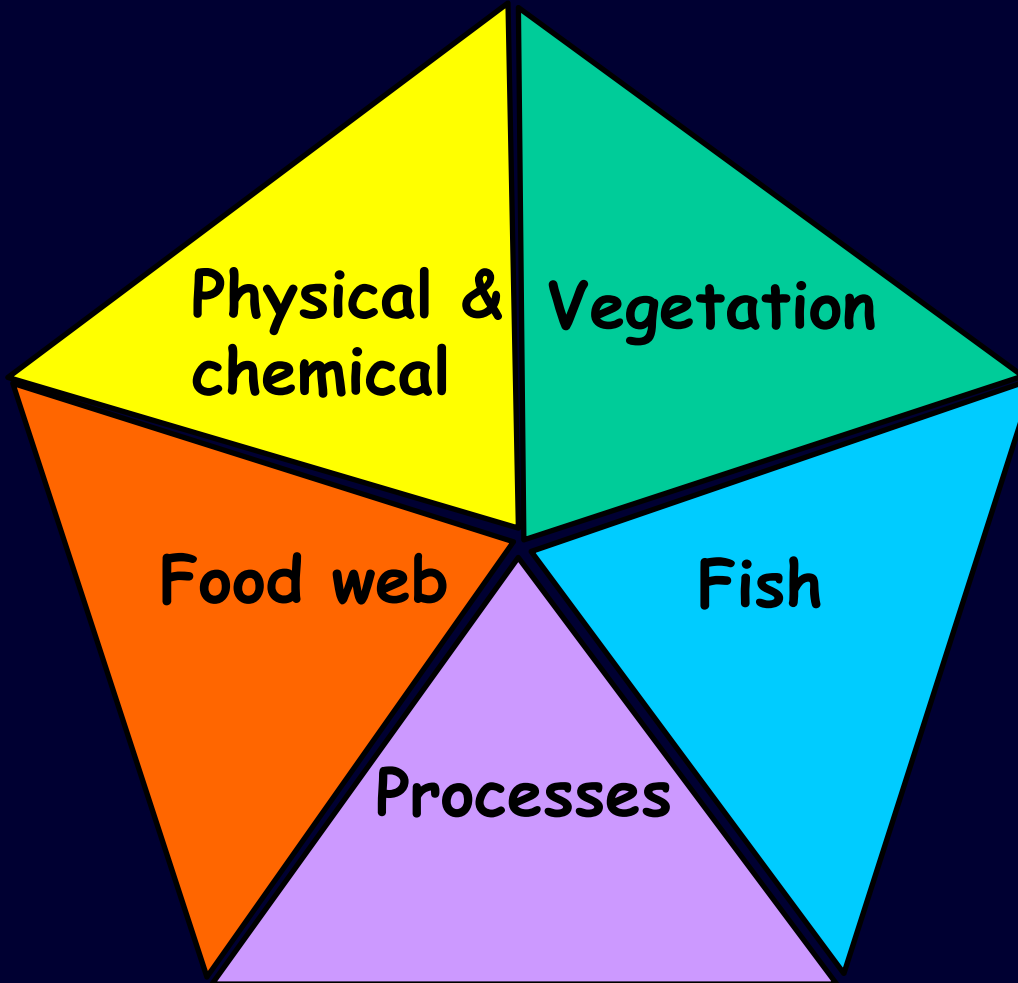
Rearing Habitat

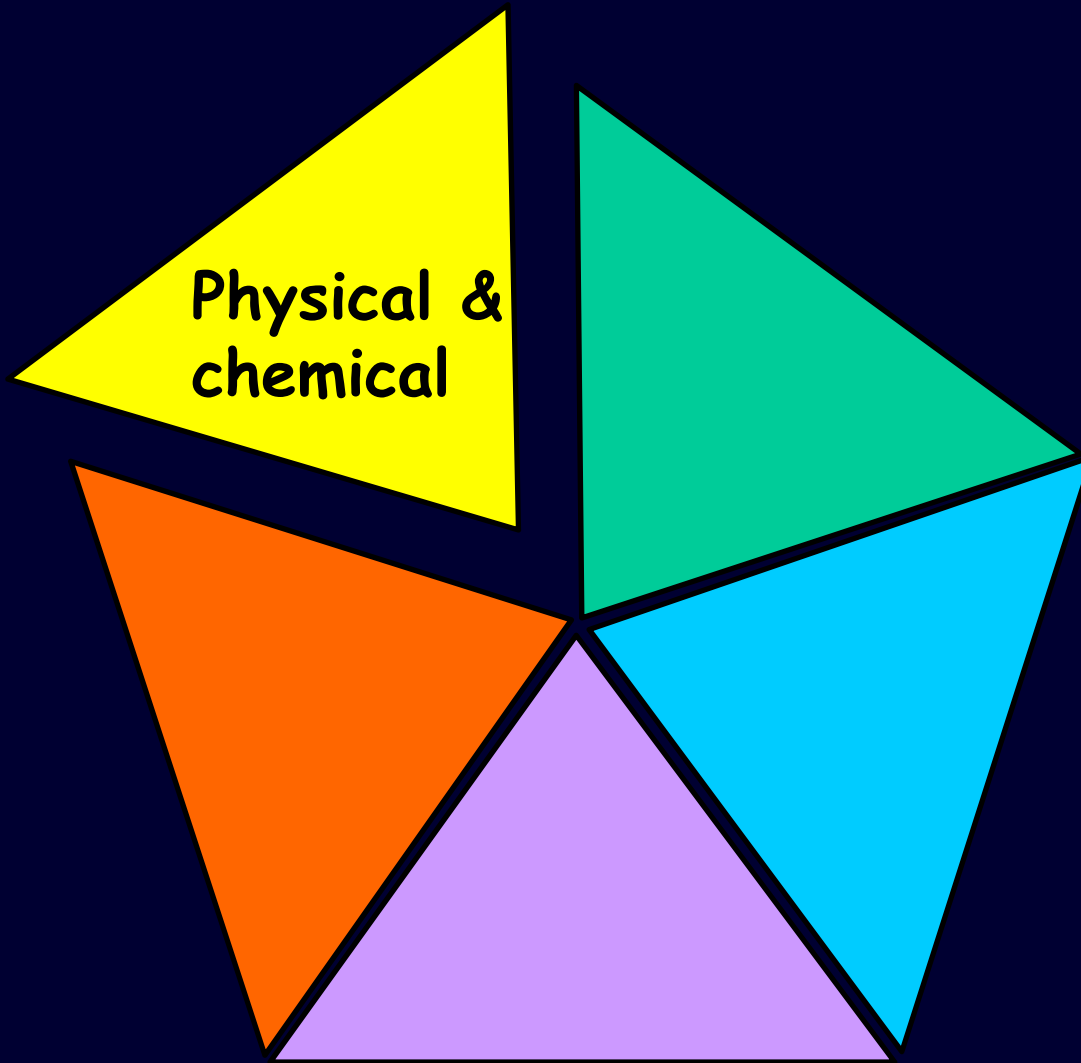


Exports to Estuary

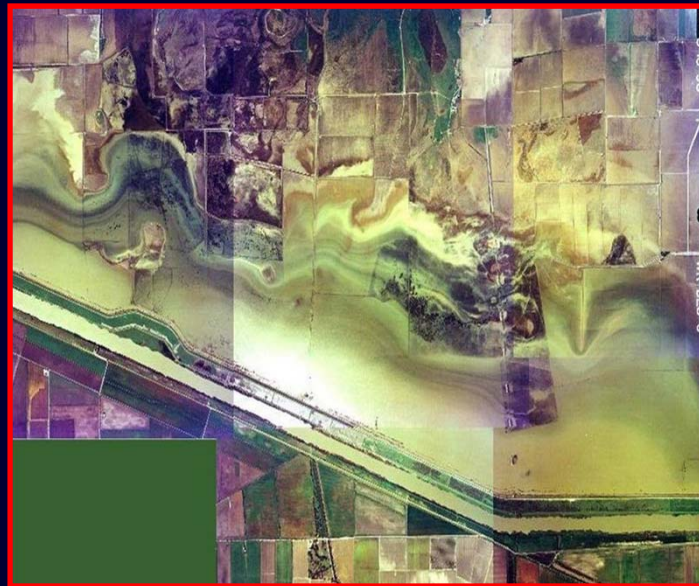
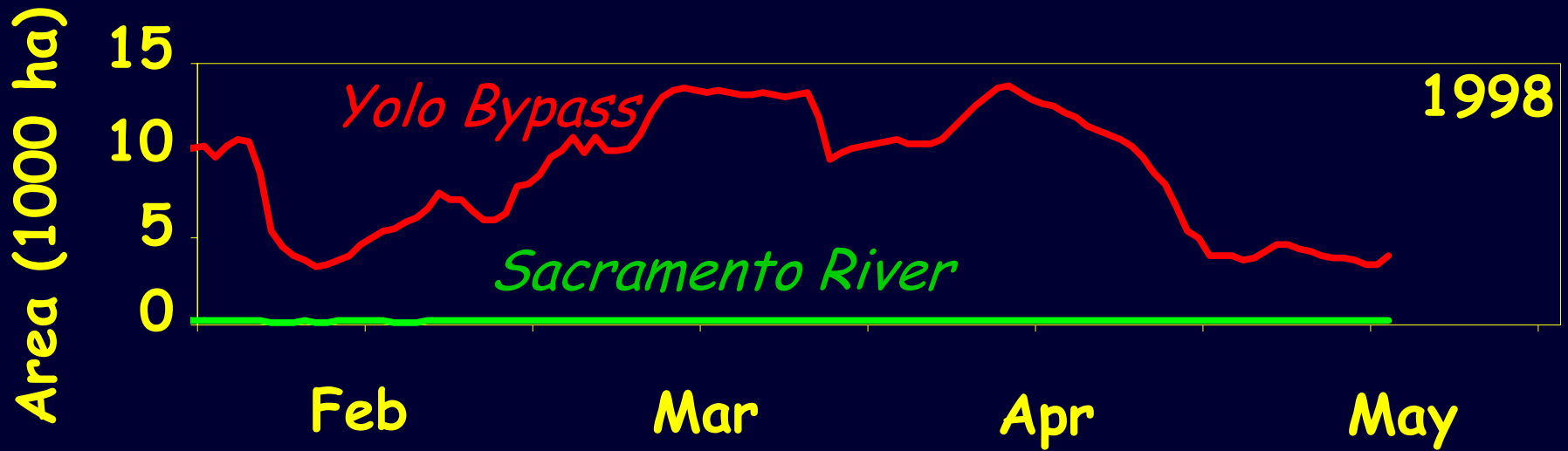


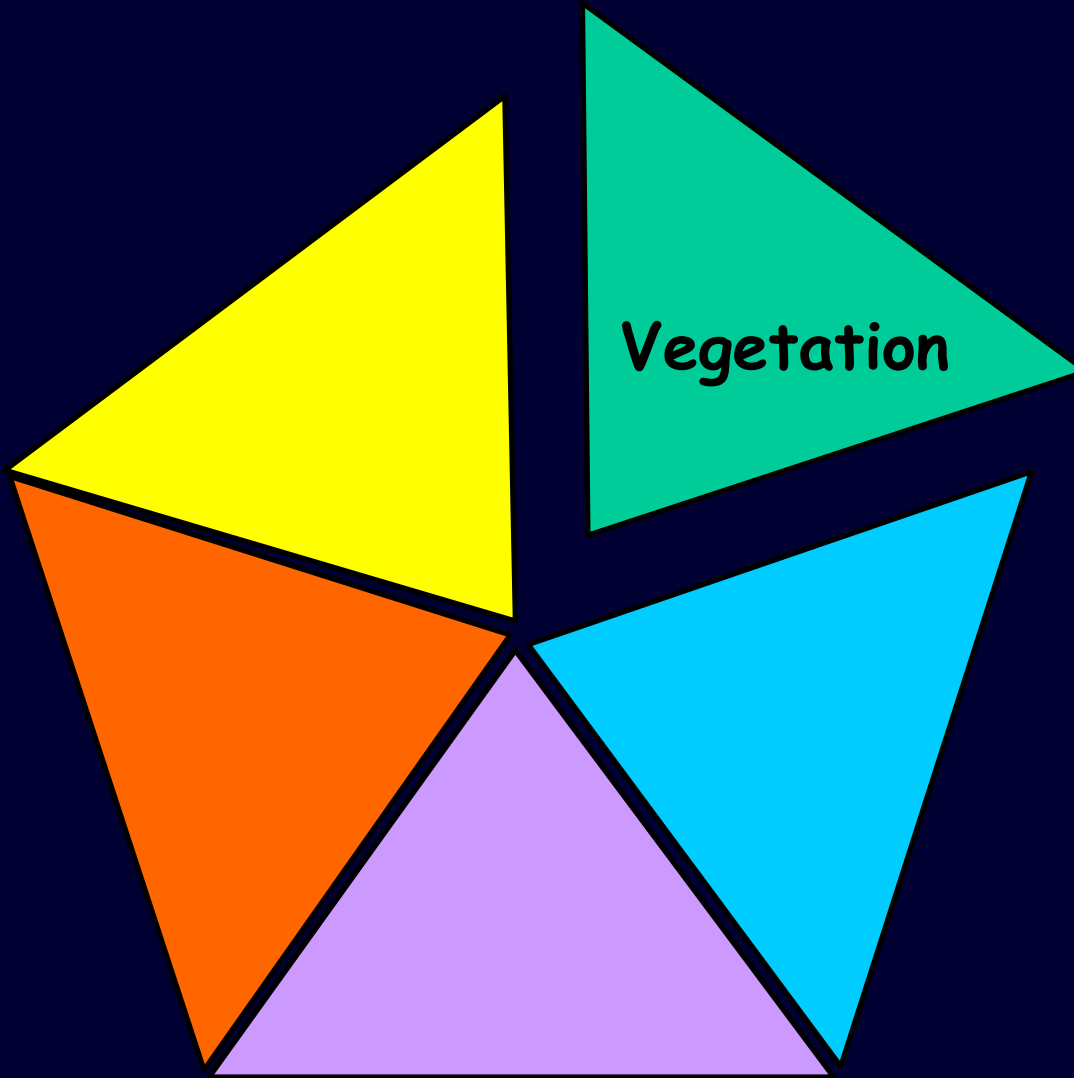
Basic Suite of Metrics



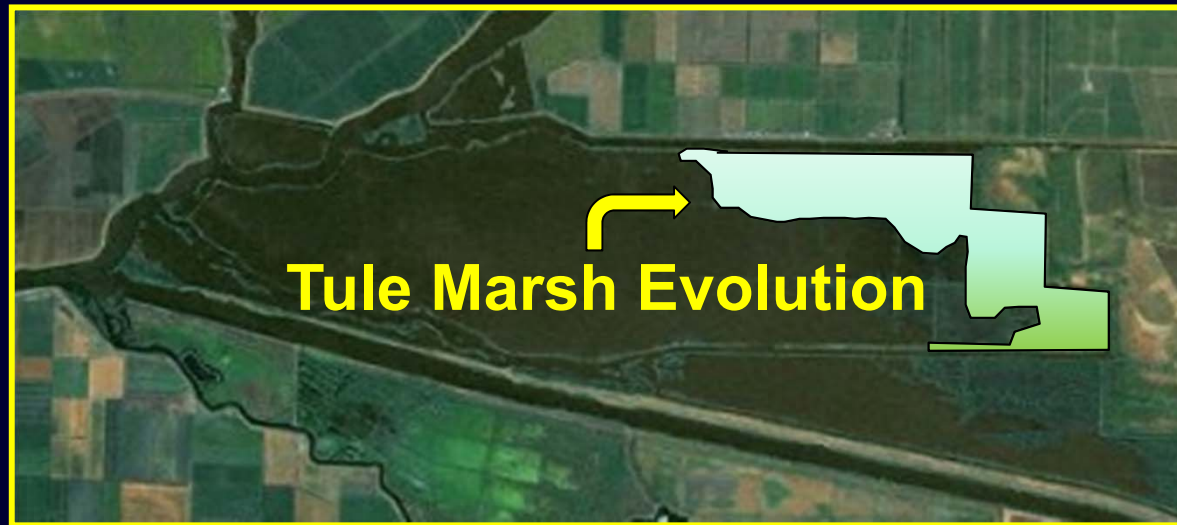


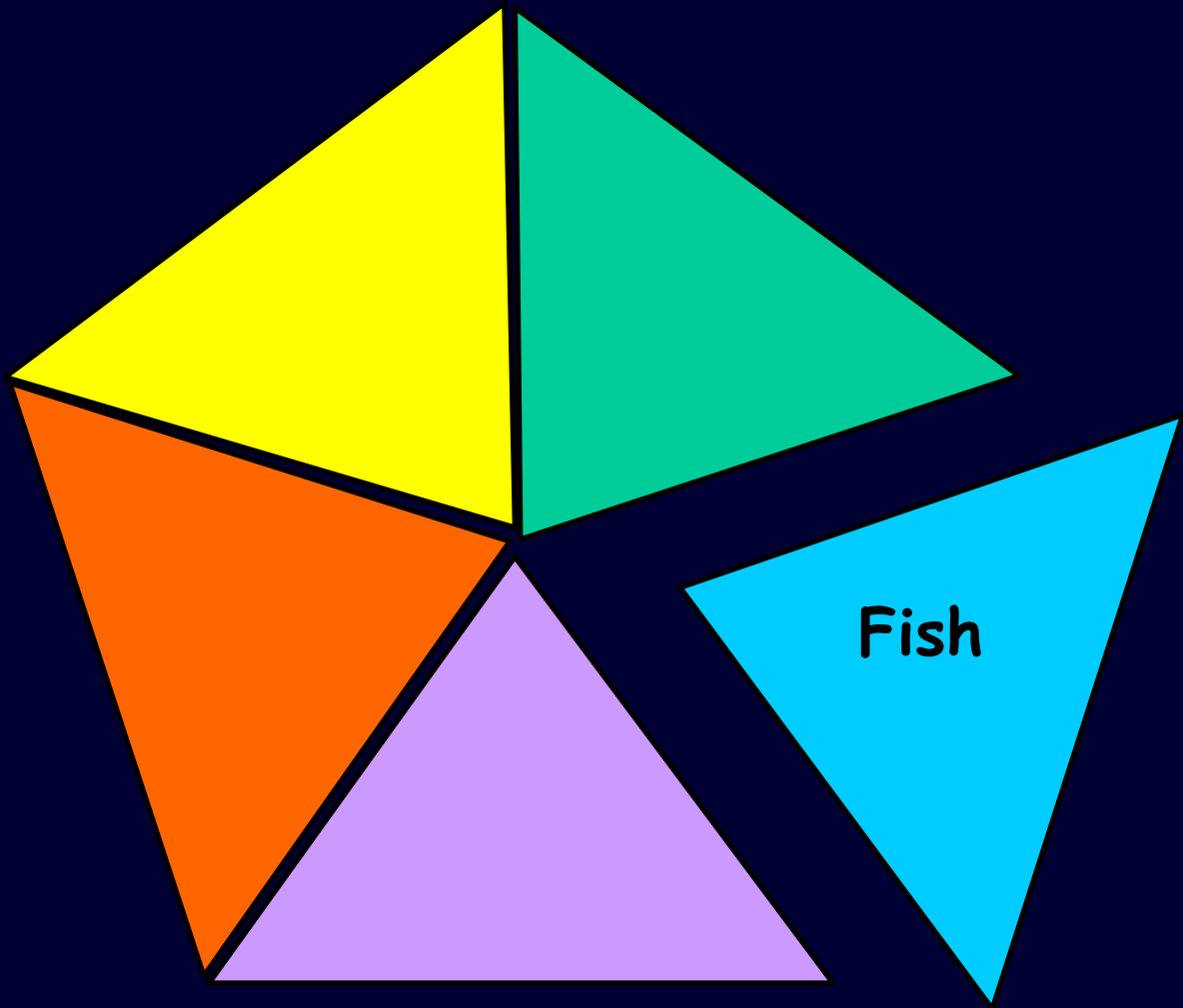
Inundated Area Metrics





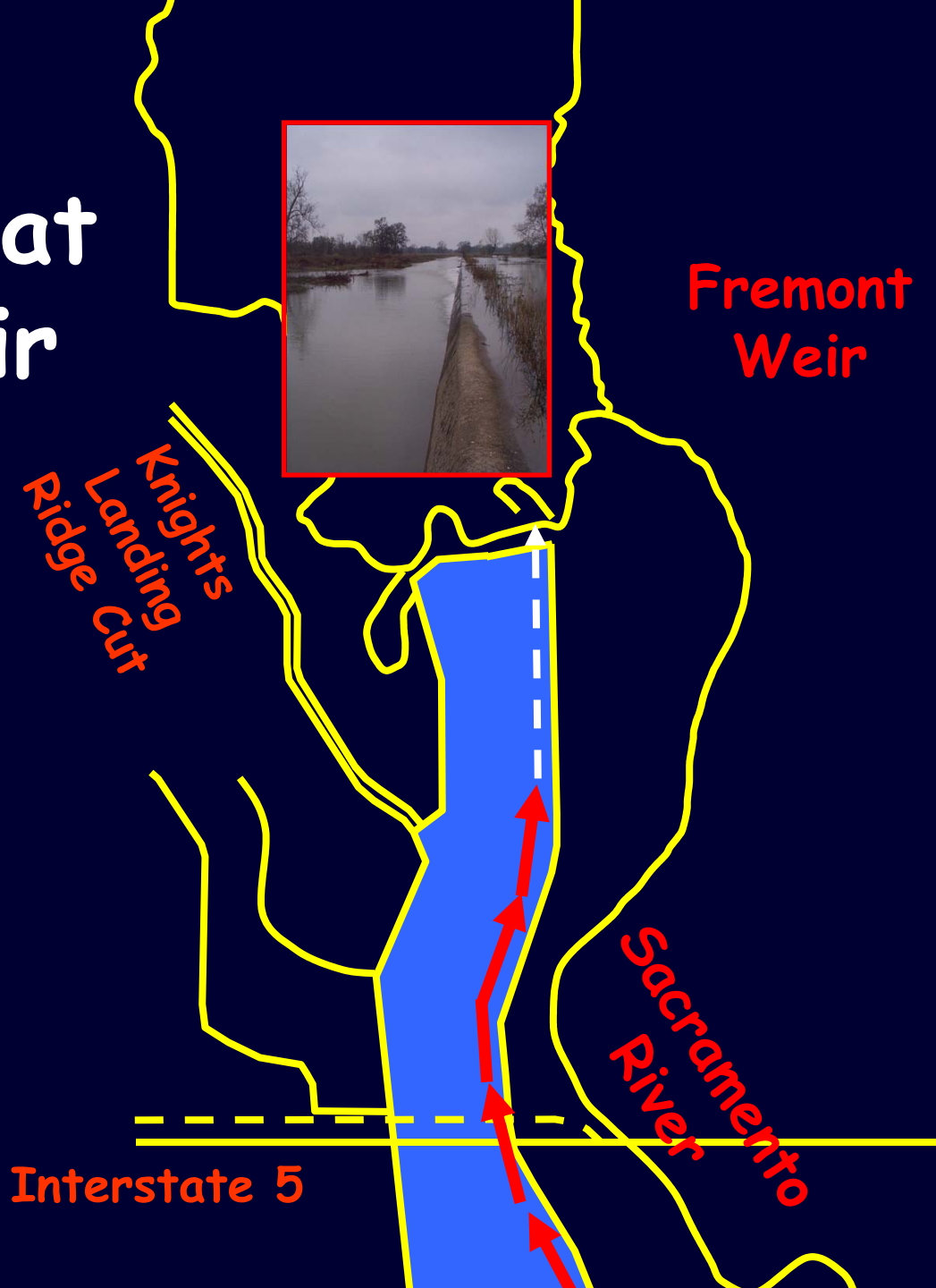
Use of Aerial Photos to Monitor Vegetation



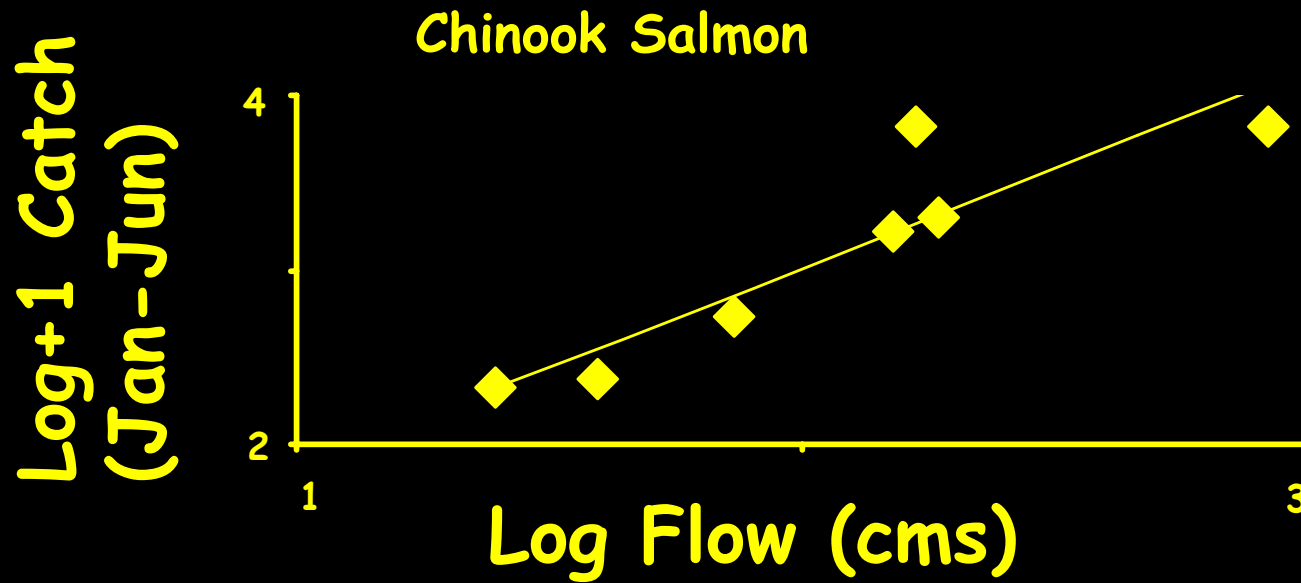


Fish

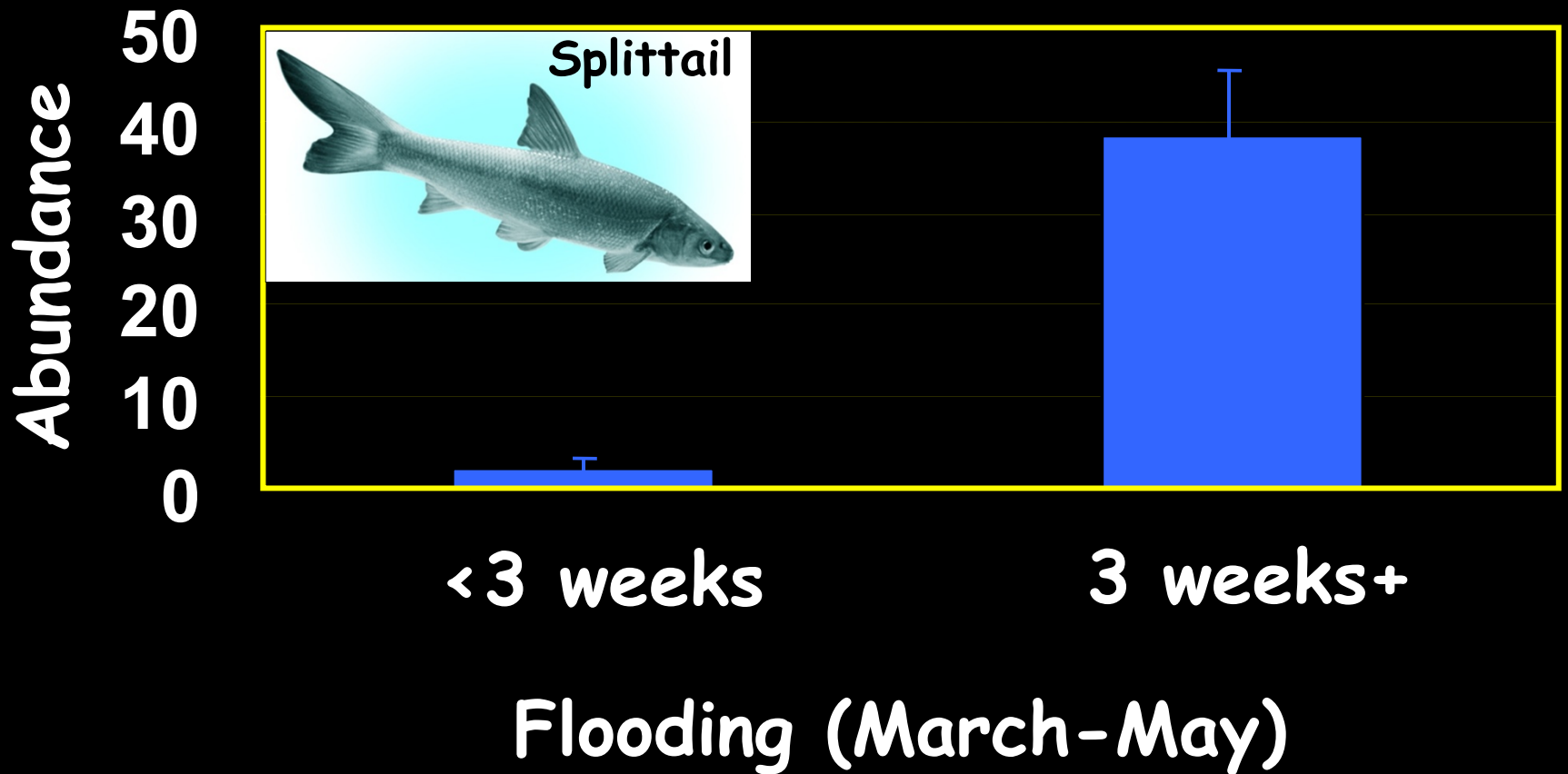
Fish Passage at Fremont Weir



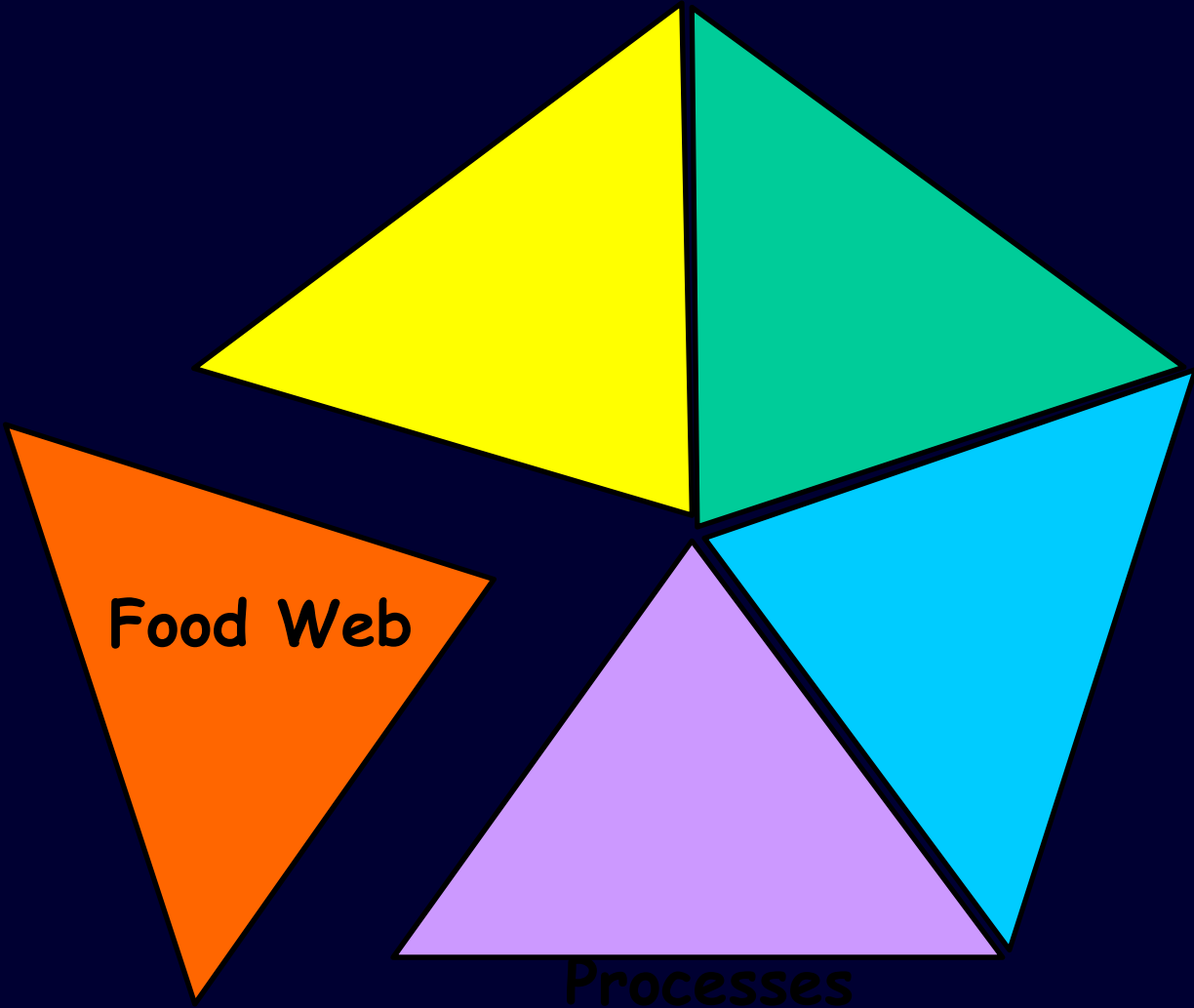
Does Salmon Use Increase With More Flow?



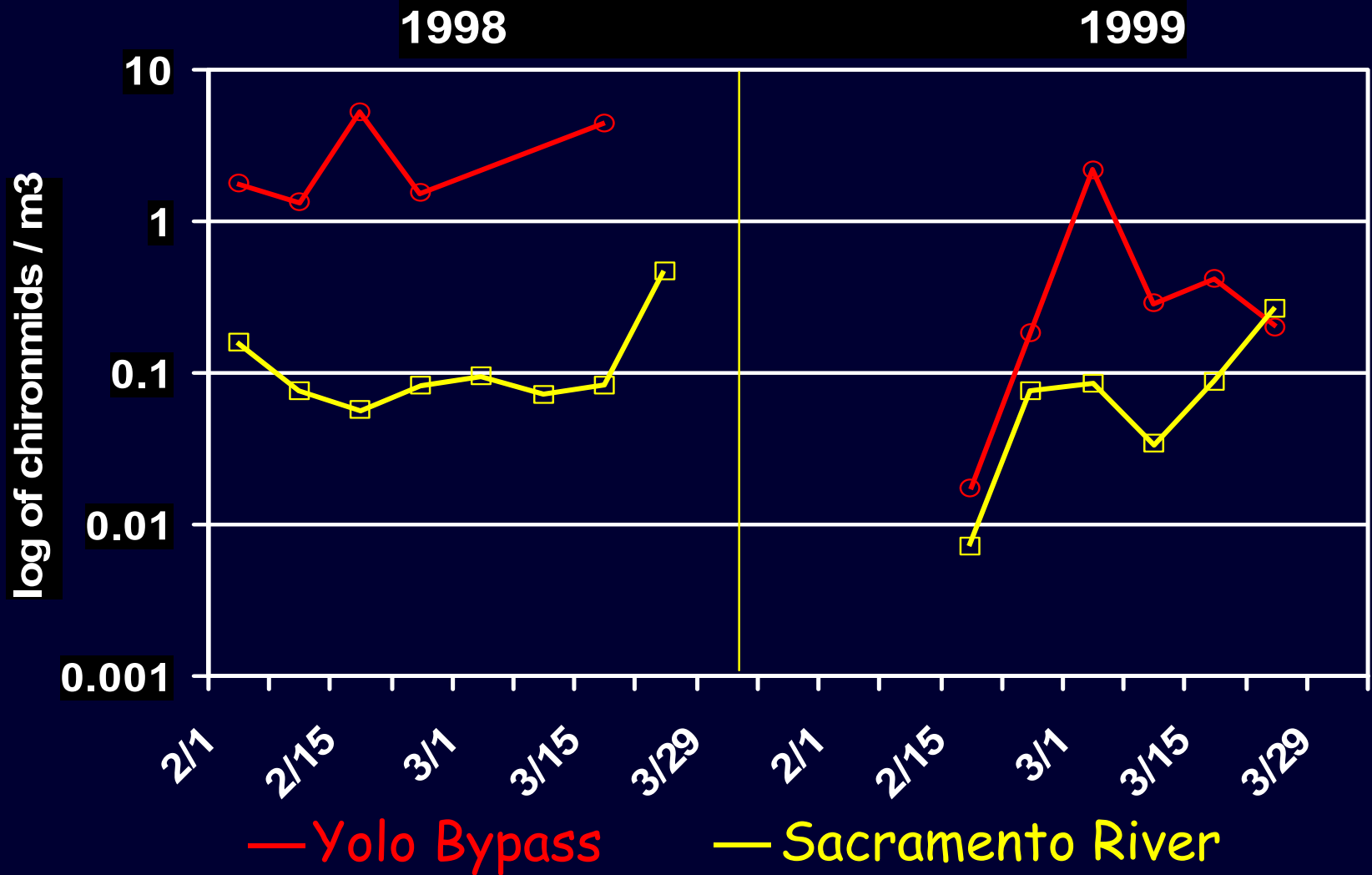
Reponse of Splittail to Flooding



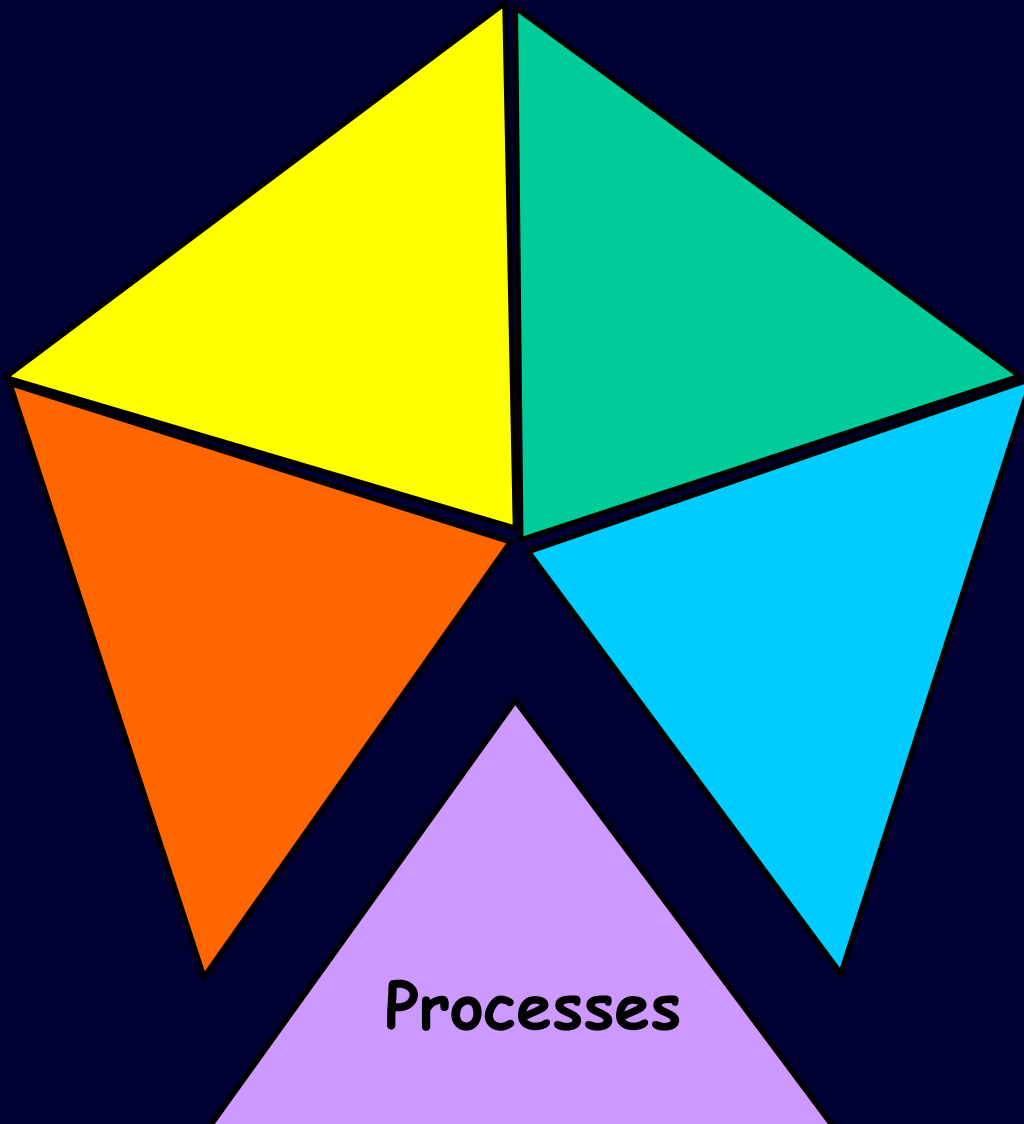
Source: Sommer et al. (2001)



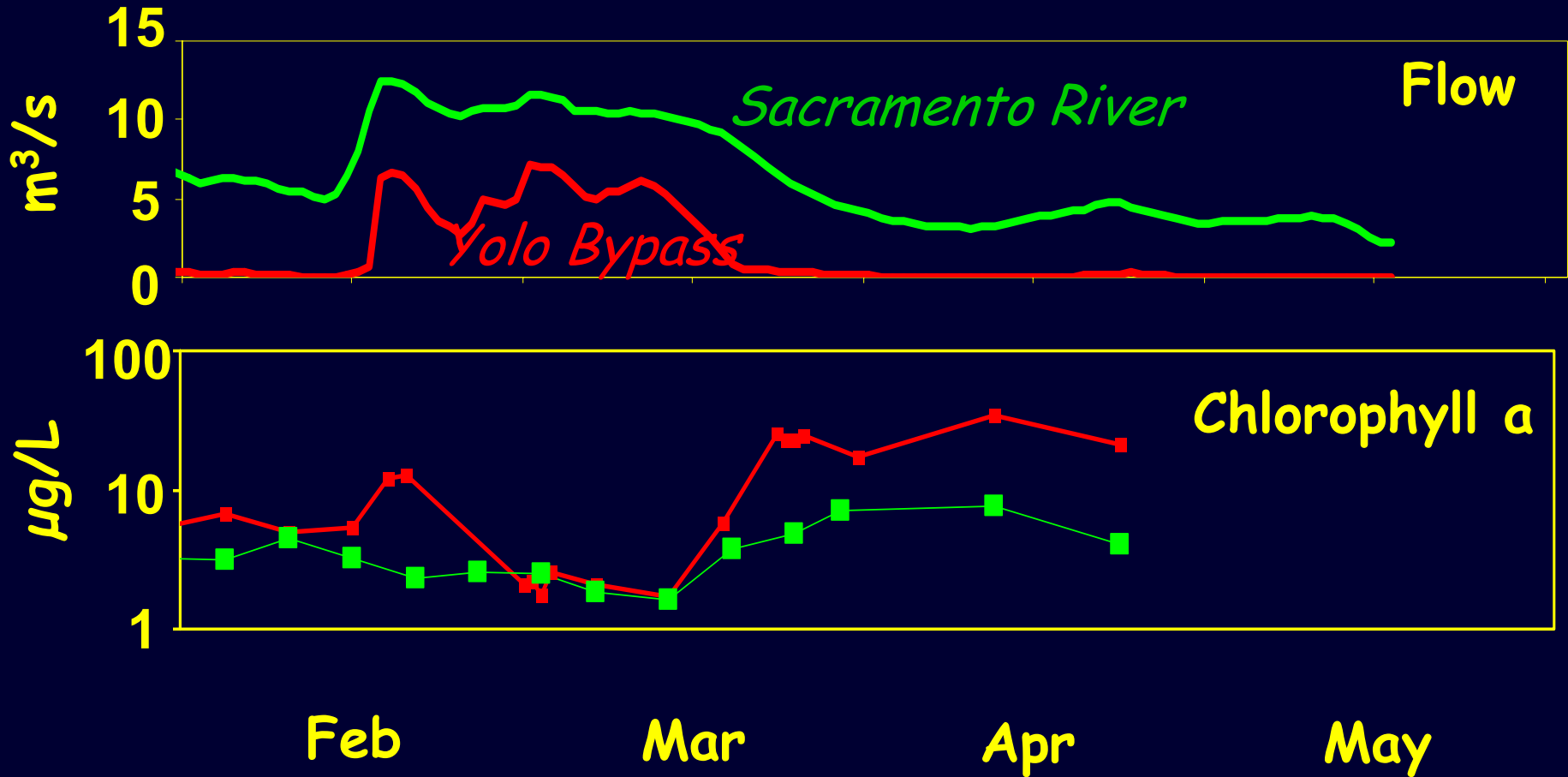
Enhanced Production of Invertebrates in Yolo Bypass



Source: Sommer et al. (2001)



Response of Chlorophyll a Export?



Source: Sommer et al. (2004)

For More Information....

<http://www.water.ca.gov/aes/pubs>

